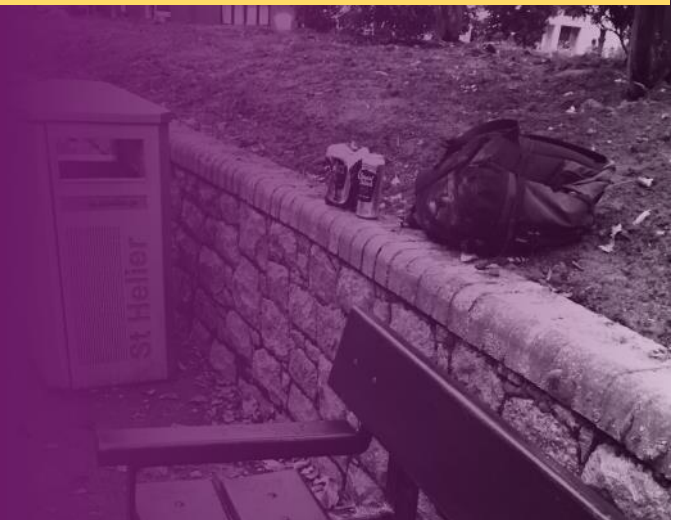




## Care and support for Jersey's most needy



Love and Care  
for Jersey's Needy

### A month of lunches

An opportunity to support our lunches which have been running now for 25 yrs. With a single £600 donation you can provide a **month of lunches** that caters for 40-45 people each Saturday of that month. A two course meal with Bread and Juice, plus unlimited Tea and Coffee. We are usually able to offer seconds and take aways.



Please contact Vini or Mark at Grace Trust 631667 for more info  
or email us on [info@gracetrust.com](mailto:info@gracetrust.com)

**Thank you to;**  
**"Air Traffic Engineering"**  
a department of Ports of Jersey.  
**DOMINION**



Global reach  
Local knowledge

Printed with permission.

**for sponsoring our Month of  
Lunches.**

Check out our new van which we acquired from Trust Ford Jersey in April this year. Our old Fiat which served us for eleven years did so well, but nothing lasts forever and we were able to acquire this new Vauxhall Combo. This is a vital part of our operation, for our Foodbank, Parklife singing, Art in the Park outings and day to day running of Grace Trust. It's all part of providing support for our community, the benefit of this van cannot be over-stated. We are so fortunate to have this multi purpose vehicle that acts as a van and a people mover.







### Meet David and Alicia (David is the tall one!)

Over the years we have had some amazing folk donate to us. David and Alicia are certainly no exception. They have supported us in our Monthly Grocery Distribution Project for the past three years. We just want to say thank you to them. They are pictured here this Summer with Vini, when they were able to see what they have provided for those struggling in our community. This project centres on families or individuals who are in real need. The recipients come to our attention by referral or may have come to our attention through our foodbank. This is one of our longest running projects which has been in operation each month for over 20 years.



Thank you to the Lions Club of Jersey, who kindly donated two pallets of Longlife milk to us in July 2025. That's 1440 litres to be precise. This is a really vital item in the bag of food that we can give through our foodbank window. With us seeing about 65 people each week, that gives us about 5 months supply of practical support towards those struggling in our community.



We would like to say a big thank you to Gisele Anno from Royal Bank of Canada and to all those from RBC who volunteered around 2 –3hrs at our October and November Saturday Lunches this Autum. Thanks for coming along and slicing up the bread, getting out the baskets, serving the meals, collecting the plates, taking things out, putting things away, washing this, washing that, putting out the jugs of orange juice, putting the jugs away, filling the dishwasher, emptying the dishwasher, draining the dishwasher, filling the tea towel basket, passing someone the cleaning spray, topping up the sugar, topping up the tea, topping up the coffee, taking out the rubbish, stacking up the chairs, rolling up the tablecloths, folding down the tables, putting the tables away, taking table cloths to Trim, hoovering up ,having a laugh, then going home!



Pictured above left to right ; Jess long time volunteer, Sue one of our long time cooks. Mark Deputy General Manager and Cook in his own right. Volunteer Caroline in green top. We then have Gisele and Sarah from RBC who have kindly assisted us in the lunches Oct – Nov 25



The little car was a gift from Danny O'S  
Danny sadly passed away some time  
ago, he used the phone quite a bit!

## The Essential Landline.

This piece of technology is still pretty valuable. We very often have folk come in who are low on credit on their mobile or have found their credit eaten away from "being in a queue, waiting to get through". So if they come in all flustered and fed up with life we can dial for them from the landline, stick it on loud speaker and put the kettle on have a chat and sure enough someone will answer at some stage, just not right away. We can then say hello "this is Grace Trust we have someone with us who has been trying to contact you" concerning whatever it may be. "They don't quite understand the letter they have received could you just explain to them and maybe arrange an appointment and a contact name for them to come along to yourselves?" It helps both sides.

## The Essential Kettle.

This is another important part of our operation! You know it does make a difference, it shouldn't really, but we all know it does. It say's "stay awhile, you are welcome, don't rush off, happy to chat if you are, we are here for you, if you need to use the phone you can, take your time, how are you now, that must be so tough, we can help with this, we can help with that, not too much we can about everything but we can always help with something.....



## Four years on.....Mark Watkins speaking;



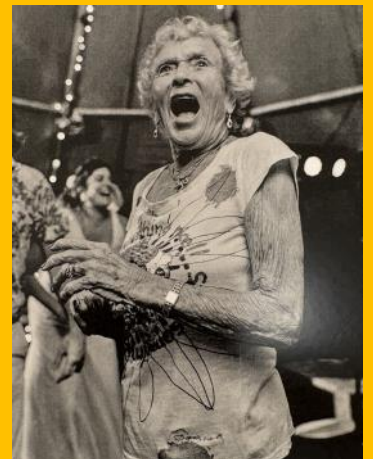
To say I have worked for Grace Trust for 4 years feels strange, the time has flown by.. I knew my working life would be completely different, as after a few days within the role I'm talking to a guy trying to make sense of life because his partner had committed suicide recently. Or on a visit to the homeless shelter in Lewis St to show my face and get introduced to the team, I came across an ex-colleague of mine in my previous work life and who had hit hard times – that was a reality check for me and quite shocking. Thankfully those sad days don't come

often, the rewarding moments are many! Our aim at the charity is to support people facing challenges and make that visit to us a good outcome for them, even if it's a small victory in the battles they are facing! My favourite project remains the Saturday lunch, it's how I started with the charity some 15 years ago or more as a volunteer. Working with all the different volunteers to make a home cooked meals for our lunch community is so much fun. There is always a buzz making it special and plenty of good stress making this event happen. As I said we deal in better outcomes for people that step through our doors which is open to all, so in these moments I have come closer to understanding what God's Grace is. This expression "There but for the grace of God, go I", often attributed to the 16th-century English preacher John Bradford, expresses empathy with people in less fortunate circumstances and at the same time humility. So, stay humble and close to God!



## When it's time to say goodbye.

We fully understand that the people we meet and get to know at Grace Trust are not always the people that their families may know or remember. For some it's a very different relationship. While for others it is still a Dad or a Husband that they are grieving for and miss. Many who come our way have no issues and simply long for community. We are grateful for having the chance to have some input into their lives that did help in some way. We never take for granted that we will see them again. We meet so many people from all social backgrounds that make up the varied layers of Jersey people. **Stevie Sharp**; what a guy, been there done that, always so many stories of earlier years, loved his food, fishing and his music. **Frank Wood**; loved Parklife was nothing but a blessing at the singing on Wednesday's and was taken from us too soon. **Maria De Sousa**; we helped Maria for a long time at Grace Trust in the office and the lunches, again gone too soon, not easy to reconcile the losing of folk sometimes. **Danny O'Connell** ; one of the earliest members of Parklife, loved singing "If a picture could paint a thousand words" and was never too far from music wherever he was, which he shared with the world around him, at volume! **Ann Trent**; what a life! What a lady, wife to a Dambuster, lived life to the full. Thank you to you all, for what you brought Grace Trust and thanks for letting us do life with you.



This QR code will take you to our website and financial donation information.

Thank you.

Registered Charity No 141

01534 631667—Office

[info@gracetrust.com](mailto:info@gracetrust.com)

[www.gracetrust.com](http://www.gracetrust.com)

Vini Jones General Manager

07829 782783

Mark Watkins Deputy General

Manager 07700 782783

**Our contact details:**

Grace Trust Jersey

3 Daisy Villas,

Lewis Street.

St Helier, Jersey,

JE4 9NG